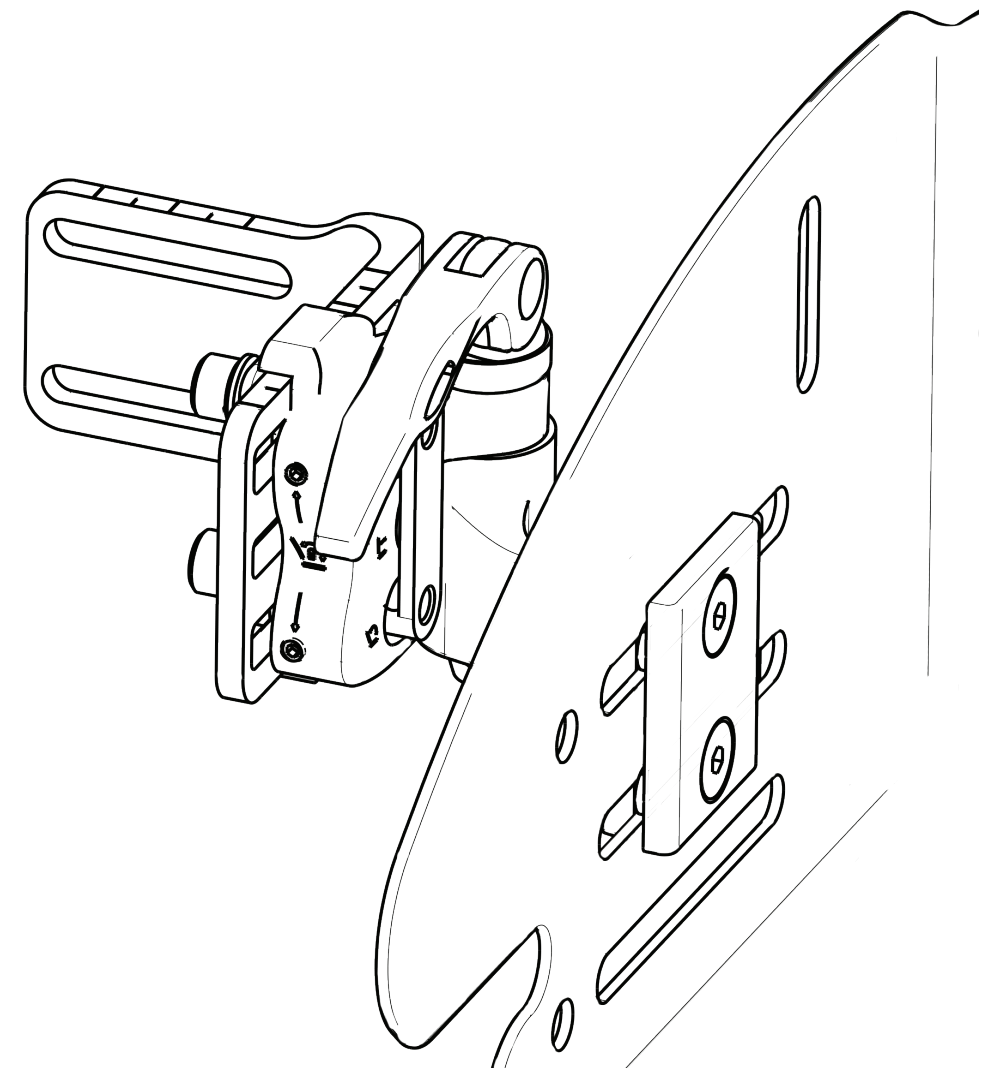


# COMPASS HARDWARE ADAPTATION FOR PILOT CHAIRS

Attaching Compass® 4 Hardware (Quick Release)  
to TiLite Pilot Pediatric Wheelchairs



[www.comfortcompany.com](http://www.comfortcompany.com)

Questions? Contact Customer Support at: 800.564.9428

[www.comfortcompany.com](http://www.comfortcompany.com)

IS-COMPASS4PILOT  
REV0618

# COMPASS HARDWARE PILOT ADAPTATION

## PARTS INCLUDED

- 2 - Double Nuts (F)
- 2 - Slide Lock Brackets (H)
- 4 - M6x1 - 30 Angle Adjustment Screws (L)
- 4 - M6 Safety Lock Washers (M)
- 4 - M6 Flat Washers (N)
- 4 - M6x1 - 14mm Screws (O)
- 2 - Socket Mount Plates (P)
- 2 - Socket Mounts (R)
- 1 - 4mm Hex Key

## PARTS REQUIRED FROM COMPASS HARDWARE KIT

- 1 - 5mm Hex Key

PLEASE REFER TO IMAGES TO THE RIGHT DURING HARDWARE INSTALLATION

- 1 Lift Release Toggle on part (A) and remove original cane clamp. Discard Cane Clamp as shown in **Figure 1**.
- 2 Using **Figure 2** as reference, loosen three screws (B and C) using 5mm Hex Key. Remove and discard Angle Adjustment Screws (B) and Washers (D).
- 3 Remove and save Depth Adjustment Screw (C), Washer (E), and Nut (K) using 5mm Hex Key.
- 4 Remove and discard original Slide Lock Bracket (G). Replace with new Slide Lock Bracket (H).
- 5 Flip Depth Adjustment Screw (C) and Washer (E), and secure with Nut (K) using 5mm Hex Key in orientation shown in **Figure 3**.
- 6 Install new M6x1-30 Angle Adjustment Screws (L), M6 Safety Lock Washers (M), M6 Flat Washers (N), and Double Nut (F) using 5mm Hex Key as shown in **Figure 3**. New configuration from inside of Bracket (I) to outside should be as follows: M6x1-30 Angle Adjustment Screws (L), M6 Safety Lock Washers (M), M6 Flat Washers (N), Depth Adjustment Screw (C), Washer (E), Triple Washer (J), Bracket (I), Slide Lock Bracket (H), Nut (K), part (A), Double Nut (F).
- 7 Repeat for other set of hardware.
- 8 Choose desired height on side panels of pilot chair using slots provided (Q) in **Figure 4**. Install Socket Mount Plate (R) to inside of panel using provided M6x1-14mm screws (O), Socket Mount Plate (P), and 4mm Hex Key as shown in **Figure 4**.
- 9 Repeat on both sides.
- 10 Attach Back Support to chair by inserting the Compass Pins into the Socket Mounts (R). Once pins are fully seated, close release toggles (A).
- 11 Refer to Back Support instructions for Compass Hardware Adjustments.

FIGURE 2

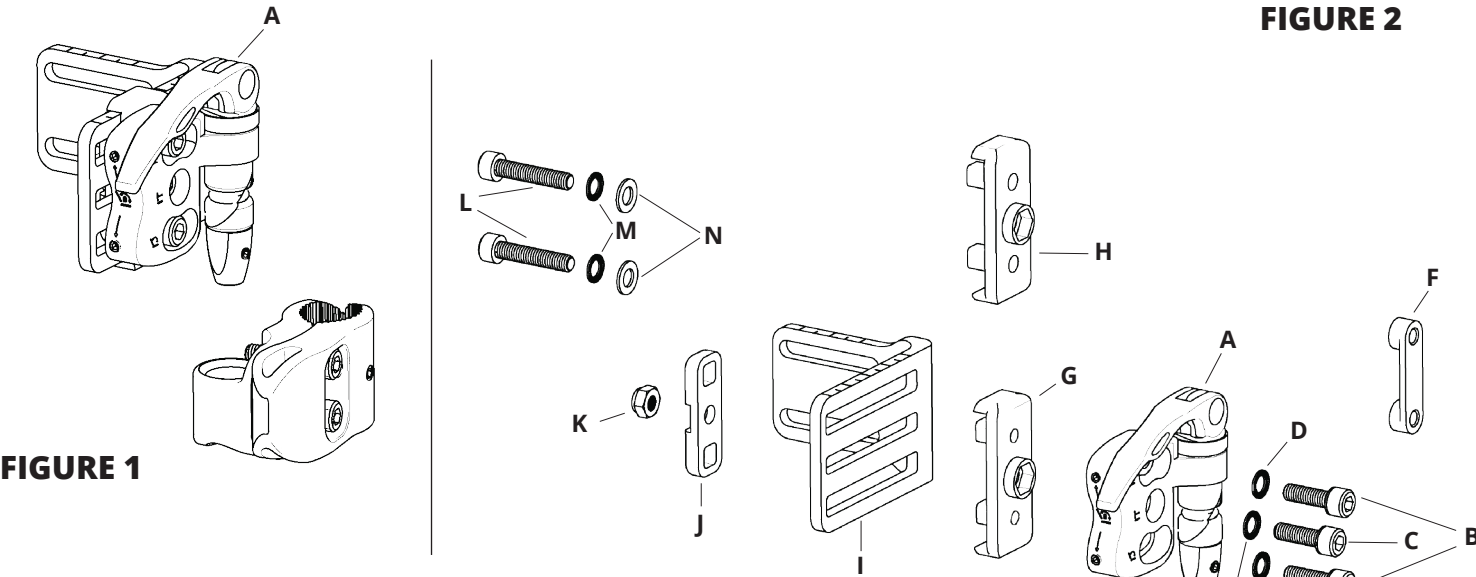


FIGURE 1

FIGURE 3

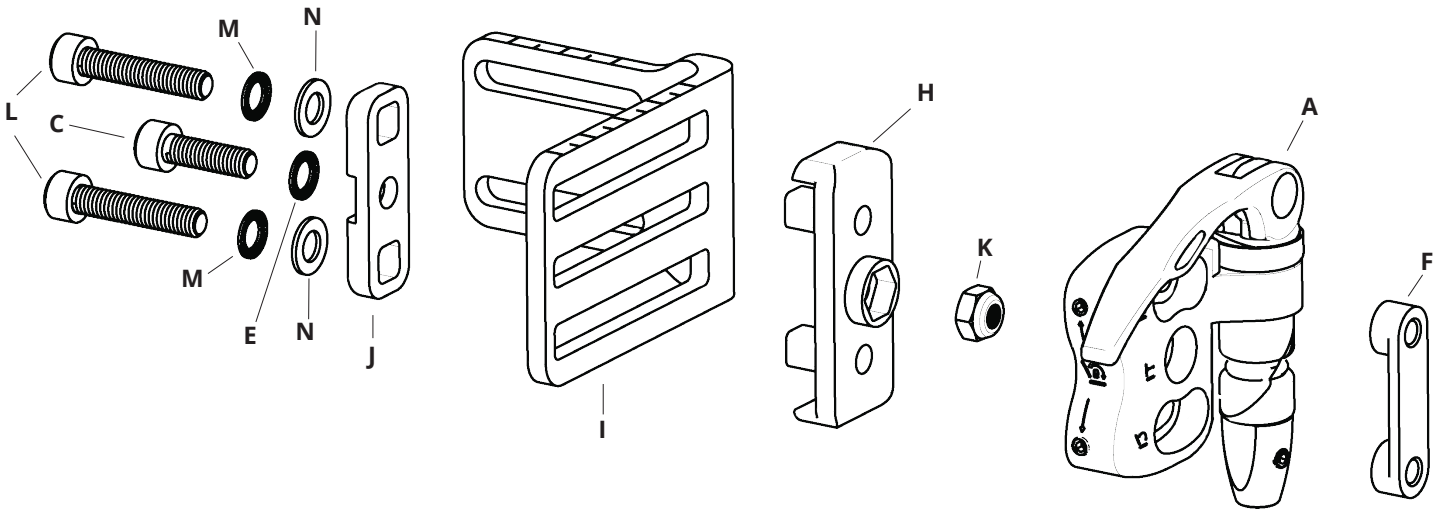


FIGURE 4

